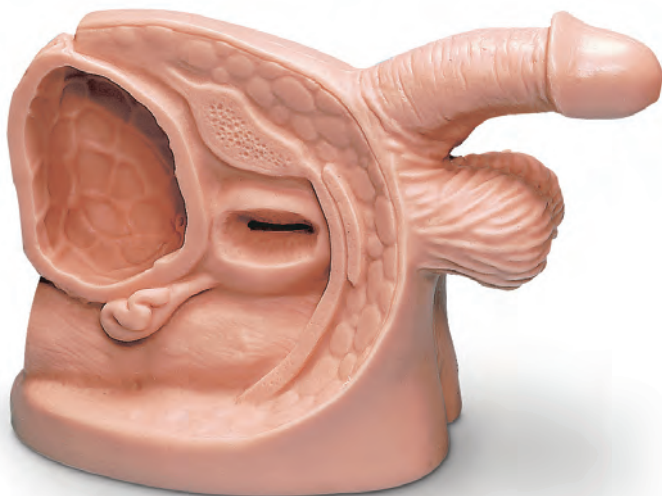




Male Catheter Model

LF01150U

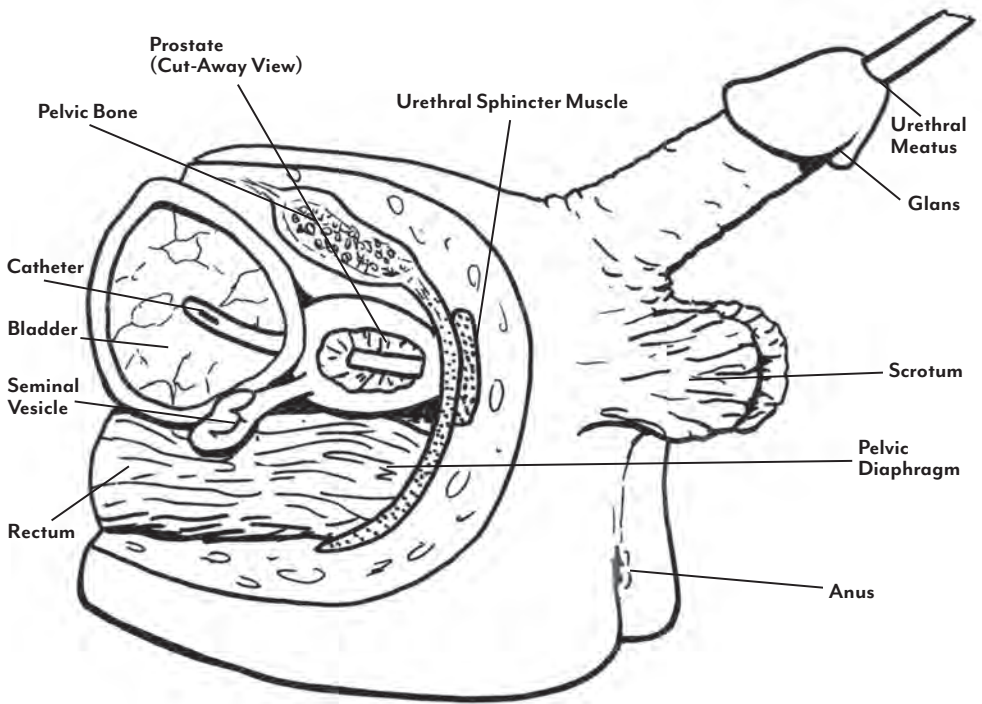
INSTRUCTION CARD



USING THE MODEL

- Use this model to practice sterile technique and proper cleansing procedures before, during, and after insertion.
- The model will accept any catheter size 16 or smaller.
- Be sure the balloon on the catheter is fully deflated before insertion or removal. Always lubricate the catheter thoroughly before each insertion.
- Lift the penis to straighten the urethra. Gently insert the catheter into the urethral meatus, through the prostate and into the bladder. Proper insertion in a live patient is evidenced by a flow of urine through the tube.

5-Year Warranty



CARING FOR THE MODEL

- The model may be washed in mild soap and water if it becomes soiled.
- Always store it in the plastic bag when not in use.
- Printed material or ballpoint pens will transfer indelible stains to the model. Certain finishes may also be damaged from prolonged contact with the model.

AVAILABLE SUPPLIES

- LF01127U** 16 FR Foley Catheter
LF01128U 16 FR Foley Catheter, 10-pack
LF00985U Lubricant Kit, 2 oz. bottles, 6-pack



ONLINE: NascoHealthcare.com
 E-MAIL: lifeform@enasco.com
 PHONE: 1.800.431.4310
 ADDRESS: 901 Janesville Ave.
 Fort Atkinson, WI 53538