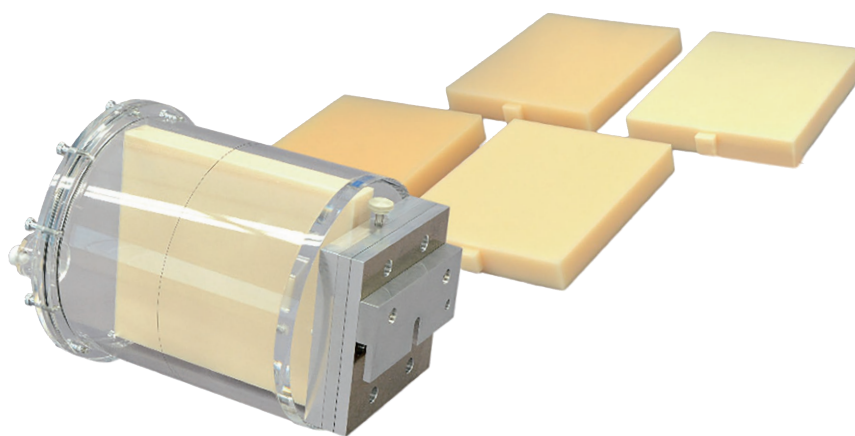


PH-55 | 41920-100

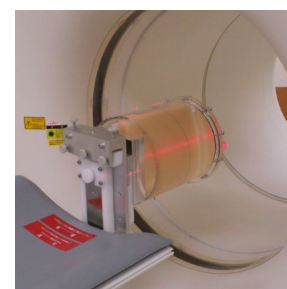
# CT ERF Phantom HIT



**A phantom designed for physical evaluation of iteratively reconstructed images under low CNR**



SHOW MORE!



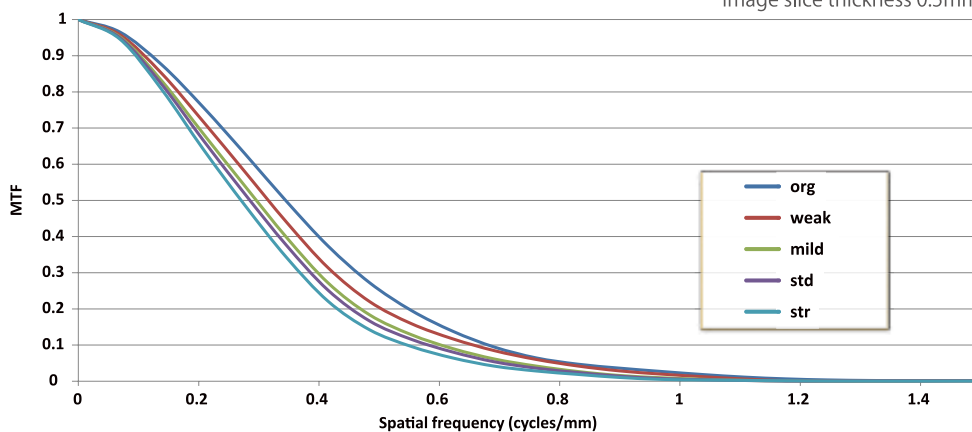
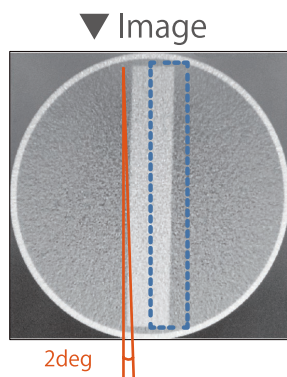
## FEATURES

## APPLICATIONS

- | The phantom is designed to physically and quantitatively evaluate iteratively reconstructed images in the low CNR area, such as abdomen, where MTF of PSF is less useful
- | The phantom uses edge spread function (ESF) to calculate MTF of the low CNR images, which facilitate assessing performance properties of iteratively reconstructed images under low CNR

| CT

▼ Modulation Transfar Funcion  
image slice thickness 0.5mm



## DESCRIPTIONS

### SET INCLUDES

- |                                       |   |
|---------------------------------------|---|
| 1 cylindrical container (200 mm dia.) | 1 fixture for the cylindrical container |
| 5 measurement plates                  | 1 philips screw driver                  |
| 1 rotation holder                     | extra screws                            |
| 1 petroleum jelly                     | 1 storage case                          |
| 1 angle adjustment holder             | manual                                  |

### SPECIFICATIONS

Phantom size:  
20 dia. x 25 cm  
7.8 dia. x 9.8 in

Phantom weight:  
4.5 kg / 10 lb

### MATERIALS

Acrylic resin, polyurethane



41919-010  
Angle adjustment holder (table-top type)  
\*included in the set  
Compatible with PH-9