



CATALOGUE

2023

www.trucorp.com
info@trucorp.com
+44 (0) 28 3888 2714

Celebrating
20 YEARS
of excellence

TruCorp have over 20 years experience within the medical simulation market. We are committed to the development of anatomically correct products to deliver medical best practice.

TruCorp have designed, engineered and produced a wide variety of training manikins for airway management, trauma training, ultrasound, pediatric procedural skills and a portfolio of simulation apps with the aim of continuing to improve educational efficiency and ultimately save more lives.

TruCorp AirSim Airway

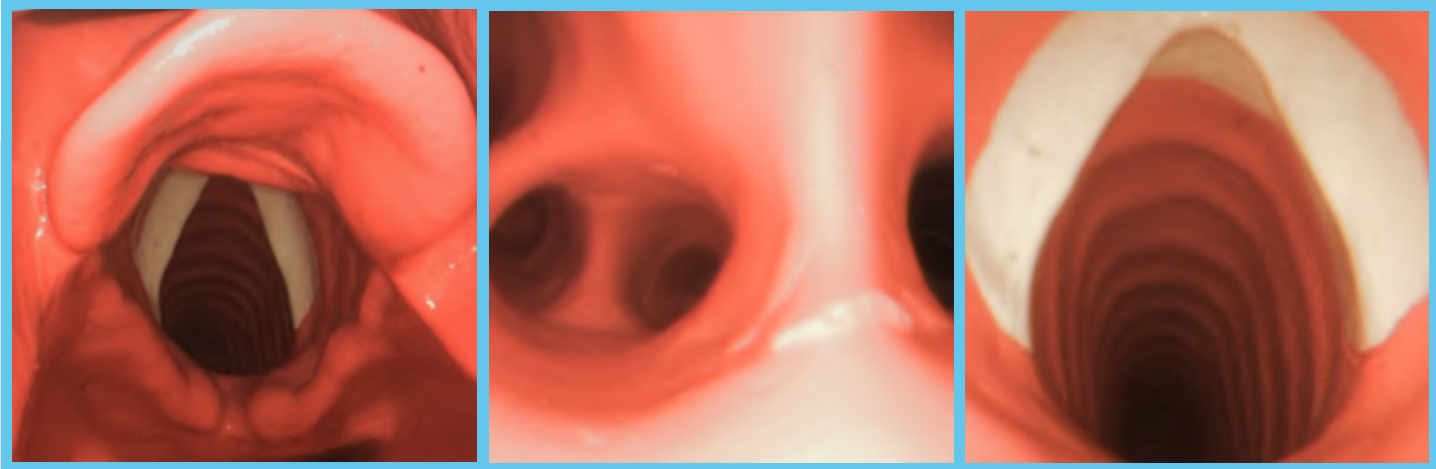
TruCorp leads the medical simulation market in providing realistic and durable training manikins. We provide a wide range of anatomically correct airway management, emergency skill and surgical skill trainers.

Our innovative AirSim Airway and manikin nasal cavities were created using CT DICOM data collected from real adults, children and infants. The AirSim Airway is incredibly realistic and durable.

All adult and child models feature an inflatable tongue with real-life size and texture, to introduce air and create tongue edema.

Our Bronchi manikins feature internal anatomical detail down to the 4th generation bronchi facilitating full airway management and bronchoscopy techniques. TruCorp's Combo Manikins are perfect for practicing percutaneous tracheostomy and needle and surgical cricothyroidotomy.

AirSim Adult Airway Internal View

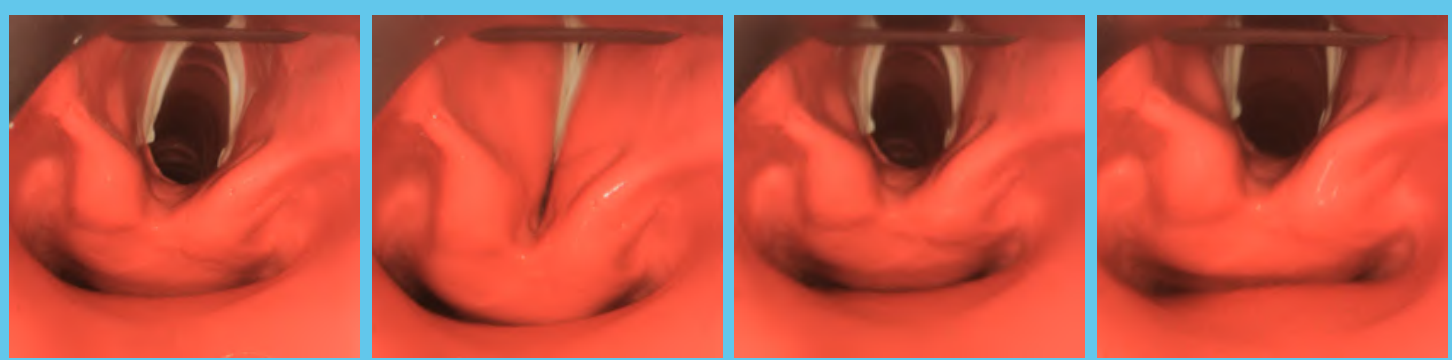


AirSim Adult Airway including view of the Epiglottis

AirSim Adult Bronchial Tree

AirSim Adult Tracheal Rings

AirSim Difficult Airway Internal View



AirSim Difficult Airway - Laryngospasm Inactive

AirSim Difficult Airway - Laryngospasm Activated

AirSim Difficult Airway - Displaced Larynx Inactive

AirSim Difficult Airway - Displaced Larynx Activated

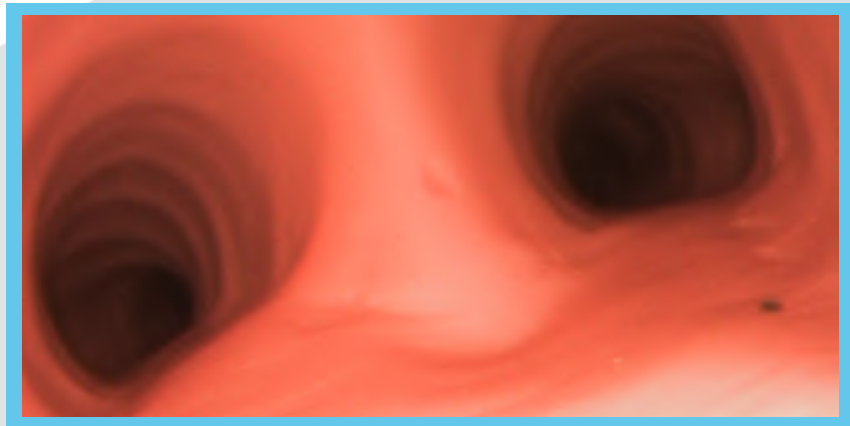
TruCorp AirSim Airway

AirSim Child Airway Internal View



AirSim Child Airway including view of the Epiglottis

AirSim Child Tracheal Rings



AirSim Child Bronchial Tree

AirSim Baby Airway Internal View



AirSim Baby Airway including view of the Epiglottis

AirSim Baby Tracheal Rings

Contents

01

Pediatric Airway Management

02

Infant Task Trainers

03

Adult Airway Management

04

Trauma Task Trainers

05

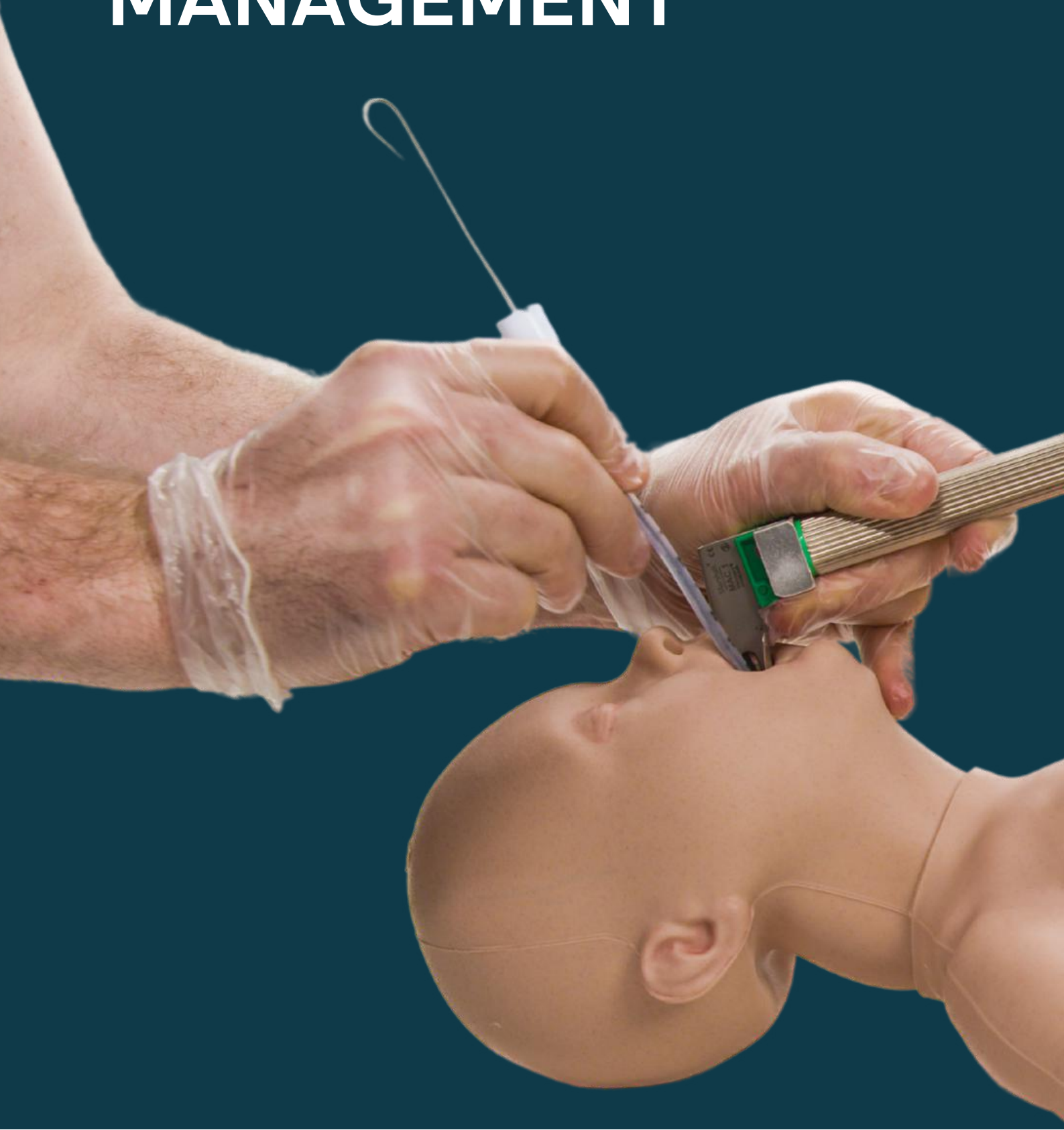
Ultrasound Task Trainers

06

Simulation Apps

**PEDIATRIC
AIRWAY
MANAGEMENT**

01



AIRSIM CHILD X RANGE

AIRSIM CHILD X

Product Code - AC10006X



The AirSim Child X is an anatomically correct pediatric training manikin for airway management.

The model is based on real CT DICOM data from a 6-year-old patient and includes the AirSim X airway with 5-year warranty.

The results are both realistic and durable pediatric features ideal for practicing basic airway management skills.

AIRSIM CHILD BRONCHI X

Product Code - AC50006X



The AirSim Child Bronchi X model provides doctors, clinical specialists and emergency responders an efficient way to practice pediatric airway management skills and diagnostic bronchoscopy techniques on an anatomically correct manikin based on a six-year-old child.

Suitable for training in laryngoscopy, bronchoscopy, intubation, lung isolation and lung suctioning techniques. Features the AirSim X airway with 5-year warranty.

AIRSIM CHILD COMBO X

Product Code - CC10006X



True-to-life training in pediatric airway management and cricothyrotomy. The AirSim Child Combo X model is ideal for training in intubation, needle & surgical cricothyrotomy, percutaneous tracheostomy and direct & video laryngoscopy.

Includes the uniquely constructed AirSim X airway enhanced with palpable cricoid landmarks, laryngeal cartilages and tracheal rings, backed by a 5-year warranty.

AIRSIM CHILD COMBO BRONCHI X

Product Code - CC50006X



The AirSim Child Combo Bronchi X trainer features the uniquely constructed AirSim X airway with 5-year warranty enhanced with palpable cricoid landmarks, laryngeal cartilages and tracheal rings.

This versatile pediatric intubation manikin is based on a 6-year-old child and ideal for practicing percutaneous tracheostomy, ventilation, bronchoscopy and needle & surgical cricothyrotomy.

AIRSIM CHILD X RANGE

Features

	AirSim Child X	AirSim Child Bronchi X	AirSim Child Combo X	AirSim Child Combo Bronchi X
AirSim pediatric airway	✓	✓	✓	✓
5 year Airsim X Airway warranty	✓	✓	✓	✓
Realistic feedback during airway management procedures	✓	✓	✓	✓
Replaceable lung bags inflate with successful ventilation	✓	✓	✓	✓
Esophagus & replaceable bag representing stomach	✓	✓	✓	✓
Lifelike external and internal anatomical features	✓	✓	✓	✓
Inflatable tongue bulb to simulate tongue edema	✓	✓	✓	✓
Missing front teeth to resemble natural dentals	✓	✓	✓	✓
'Real feel' skin covering for added realism	✓	✓	✓	✓
Bronchi accurate down to the fourth generation		✓		✓
Wraparound replaceable neck skin rotates for 10-15 incisions			✓	✓
Sternal notch, tracheal rings, cricoid and laryngeal cartilages			✓	✓

Skills

	AirSim Child X	AirSim Child Bronchi X	AirSim Child Combo X	AirSim Child Combo Bronchi X
Endotracheal/Nasotracheal intubation	✓	✓	✓	✓
Nasogastric (NG) tube insertion	✓	✓	✓	✓
Full range of supraglottic device insertion	✓	✓	✓	✓
Bag-valve mask (BVM) ventilation techniques	✓	✓	✓	✓
Direct and video laryngoscopy	✓	✓	✓	✓
Combi tube insertion			✓	✓
Awake fiber optic examination			✓	✓
Diagnostic bronchoscopy		✓		✓
Lung isolation & suctioning techniques		✓		✓
Needle and surgical cricothyroidotomy			✓	✓
Percutaneous tracheostomy			✓	✓

AIRSIM BABY X RANGE

AIRSIM BABY X

Product Code - JR10001X



AirSim Baby X is the most anatomically correct pediatric airway trainer for teaching and training infant airway management.

Features accurate internal and external anatomical details based on a CT-DICOM data from a 5-month-old infant.

FEATURES

- ✚ AirSim X airway with a 5-year warranty is certified to practice 20,000 intubation cycles without fail
- ✚ Replaceable lung bags provide realistic feedback during technique training
- ✚ User feedback through the visualization of stomach inflation & lung expansion
- ✚ True to life external & internal anatomical features allow for easy demonstration of all pediatric video laryngoscopes
- ✚ Modular design allowing for all parts to be changed within your organization
- ✚ Realistic skin covering with lifelike texture

SKILLS

- ✚ Double nasotracheal intubation
- ✚ Endotracheal tube insertion
- ✚ Bag-valve mask (BVM) ventilation techniques
- ✚ Full range of supraglottic device insertion (including LMA)
- ✚ Direct and video laryngoscopy

AIRSIM PIERRE ROBIN X

Product Code - PR10001X



AirSim Pierre Robin X was developed in collaboration with clinicians from Children's Hospital Los Angeles.

An anatomically correct difficult airway has been constructed based on real CT data of a six-month-old infant and exhibits various congenital defects of an infant with PRS including:

- ✚ Significant mandibular hypoplasia
- ✚ Micrognathia
- ✚ Glossoptosis
- ✚ Cleft palate
- ✚ Bifid uvula

FEATURES

- ✚ Accurate representation of a pediatric patient with Pierre Robin Sequence
- ✚ Anatomically correct details for true to life medical procedure training
- ✚ Ideal for practicing airway obstruction management techniques
- ✚ Provides realistic feedback during airway management & laryngoscopy practice
- ✚ 'Real feel' skin covering for added realism
- ✚ Anatomically correct AirSim X airway with 5-year warranty certified for over 20,000 intubation cycle

SKILLS

- ✚ Double nasotracheal intubation
- ✚ Endotracheal tube insertion
- ✚ Bag-valve mask (BVM) ventilation techniques
- ✚ Full range of supraglottic device insertion (including LMA)
- ✚ Direct and video laryngoscopy

**INFANT
TASK
TRAINERS**

02



INFANT TASK TRAINERS

TruInfant IO Leg

Product Code - TINIOLEG1



The TruInfant IO Leg is a realistic task trainer for practicing the skills associated with intraosseous (IO) infusion of the tibia. This model is based on a 5-month-old infant.

Featuring realistic anatomy including the tibial tuberosity and patella, users can identify the proximal tibia intraosseous needle insertion site. Learners benefit from lifelike resistance when penetrating the medullary cavity

FEATURES

- ✚ Realistic infant leg anatomy including tibial tuberosity & patella
- ✚ Lifelike resistance when penetrating medullary cavity
- ✚ Positive user feedback by withdrawing blood to confirm successful technique
- ✚ Ready to use! No setup required. Begin training immediately using IO inserts pre-filled with blood
- ✚ Replacement IO inserts are quick & easy to replace

SKILLS

- ✚ Identification of proximal tibia intraosseous needle insertion site
- ✚ IO tibia needle placement
- ✚ Aspiration of marrow blood through syringe
- ✚ Recommended equipment size: Size 18G needle

TruBaby X

Product Code - TB10001x



Our pediatric clinical skills training model is ideal for anesthetists, nurses & other pediatric emergency medical professionals practicing Directly Observed Practical Skills (DOPS), Pediatric Advanced Life Support (PALS) and critical emergency medicine including infant airway management and more.

TruBaby X is incredibly lifelike with the appearance, weight, size and movement of a 5-month-old infant.

FEATURES

- ✚ Realistic & durable AirSim X Airway with a 5-year warranty
- ✚ Realistic movement including head tilt, chin lift & jaw thrust
- ✚ Realistic rib structures including xiphoid process & clavicle
- ✚ Palpable landmarks in the 2nd intercostal space midclavicular line & 5th intercostal space mid-axillary line
- ✚ Palpable vertebrae landmarks
- ✚ Lumbar puncture can be practiced at L3-L4 & L4-L5 spine locations
- ✚ Proximal tibia interosseous needle insertion site
- ✚ Contains tibial tuberosity anatomy & patella anatomy
- ✚ Realistic anatomy to practice inserting catheter tube to extract urine
- ✚ Option for interchangeable male and female genitalia
- ✚ Fully enclosed fluid management system giving realistic blood flashback & flow
- ✚ Allows needle cannulation at various locations in hand, arm & foot with realistic blood flashback
- ✚ Realistic look & feel of tissues
- ✚ Lifelike responsiveness during procedure training
- ✚ Set-up time is less than 5 minutes

INFANT TASK TRAINERS

TruBaby X

Product Code - TB10001x

SKILLS

AIRWAY MANAGEMENT

- Endotracheal tube insertion with chest rise
- Double nasotracheal intubation
- BVM (bag-valve-mask) ventilation techniques
- Supraglottic device insertion (full range)
- Direct & video laryngoscopy
- Realistic movement including head tilt, chin lift and jaw thrust
- Modular design so all parts are fully interchangeable

CPR

- Full recommended depth of 1.5 inches can be achieved with full chest re-coil.

LUMBAR PUNCTURE

- Ability to manoeuvre the baby into either the required lateral decubitus or upright position.
- Palpable vertebrae landmarks including the iliac crest.
- Lumbar puncture can be practised at L3-L4 and L4-L5 spine locations.
- Accurate needle placement allows for positive response and collection of simulated cerebrospinal fluid (CSF).

INTRAOSSEOUS (IO) INFUSION (TIBIA)

- Features the tibial tuberosity and patella anatomy which facilitates the identification of the proximal tibia intraosseous needle insertion site.
- Realistic resistance when penetrating the medullary cavity.



INFANT TASK TRAINERS

TruBaby X

Product Code - TB10001x

SKILLS

NEEDLE THORACENTESIS FOR TENSION PNEUMOTHORAX

Realistic rib structures including xiphoid process and clavicle.

Palpable landmarks in the 2nd intercostal space mid clavicular line and the 5th intercostal space mid auxiliary line.

Audible hiss when needle is successfully inserted.

CHEST DRAIN (AIR ONLY)

Palpable landmarks in the 5th intercostal space mid auxiliary line.

Facilitates either the Seldinger chest drain insertion technique the needle thoracocentesis approach for the treatment of a pneumothorax.

URETHRAL CATHETERIZATION

Realistic anatomy to practice and learn the techniques of catheterization.

Upon successful entry fluid will flow from the catheter.

Option for interchangeable male and female genitalia

PERIPHERAL VENOUS CANNULATION

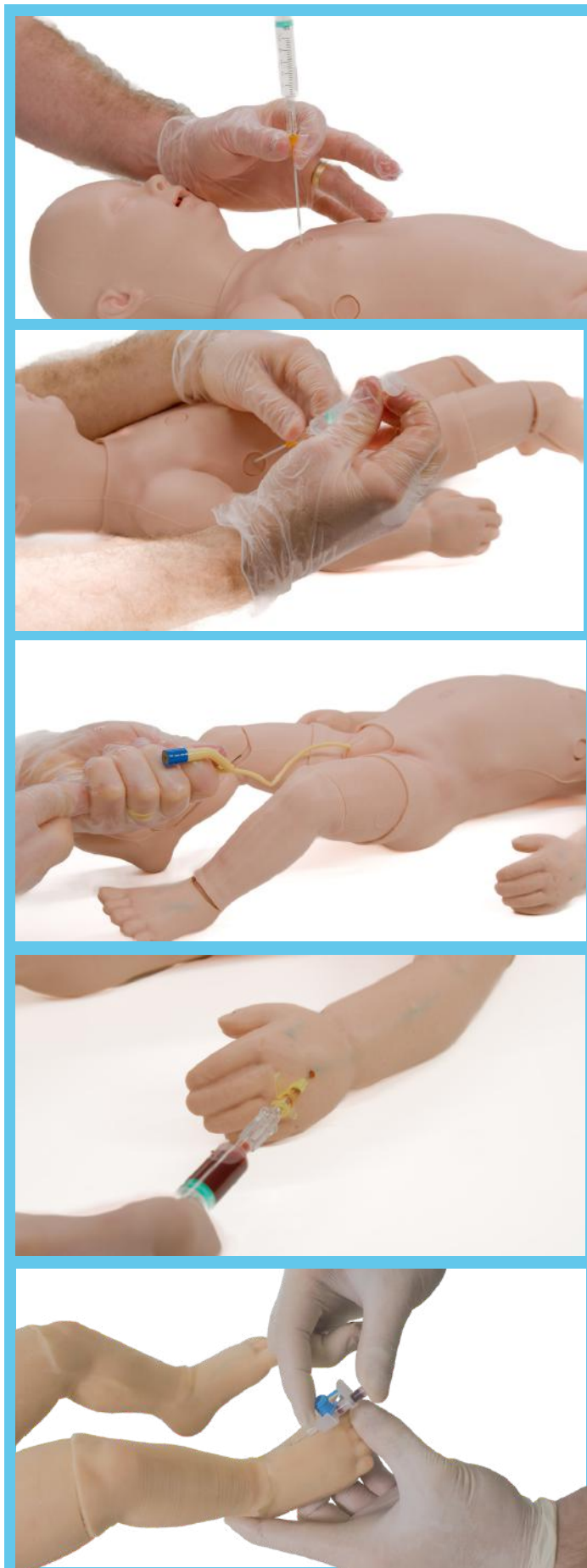
Manual Activation of venous blood flow allows fluids to be withdrawn and administered providing realistic blood flashback.

HAND AND ARM

Contains the dorsal venous arch, cephalic and basilic veins allowing needle cannulation at various locations.

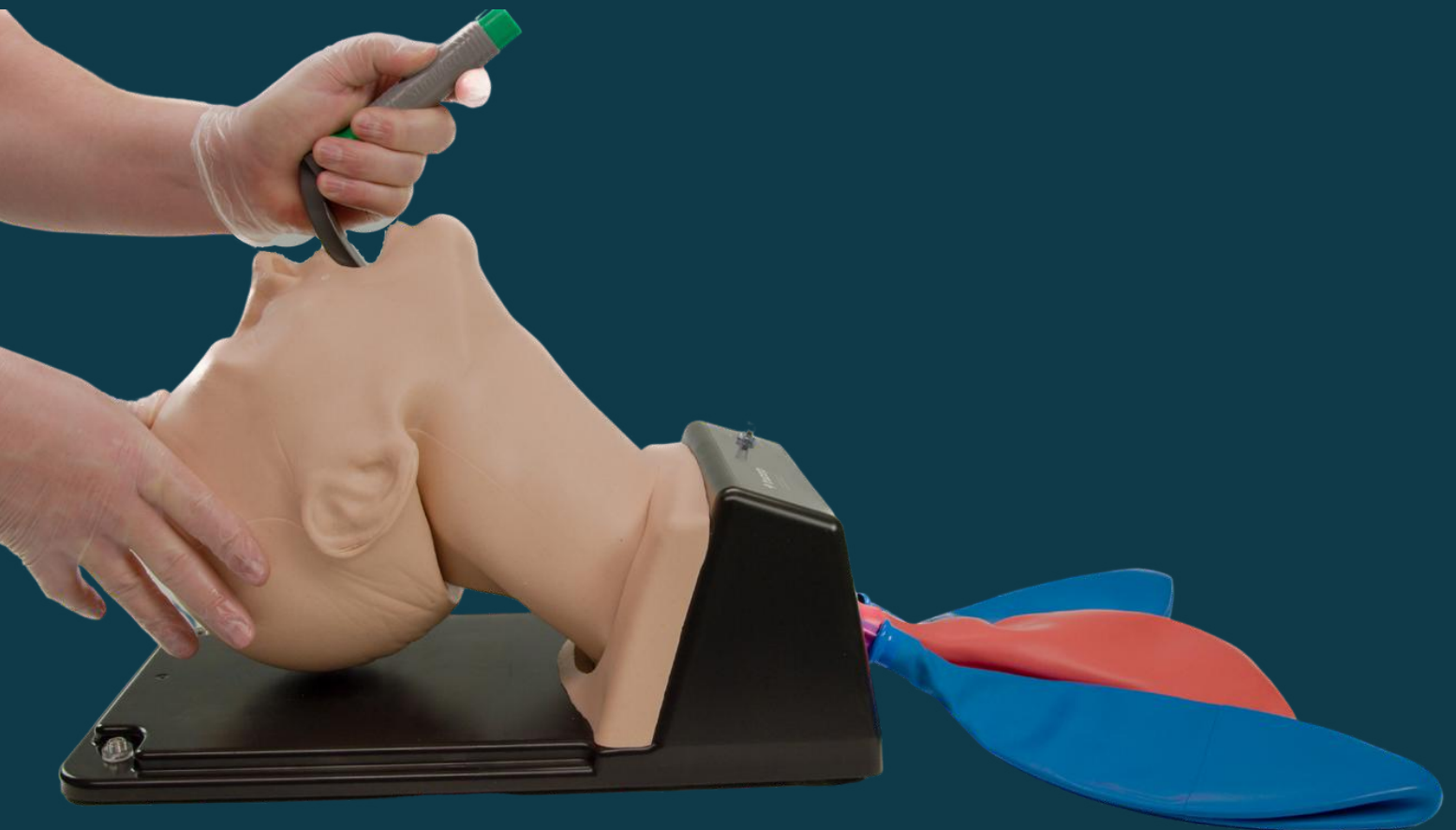
FOOT

Contains the dorsal venous arch, great and lesser saphenous veins allowing needle cannulation.



**ADULT
AIRWAY
MANAGEMENT**

03



AIRSIM ADULT X RANGE

AIRSIM ADVANCE X

Product Code - AA91100X



TruCorp AirSim Advance X features the uniquely constructed AirSim X airway and an anatomically correct nasal passage for visual accuracy and realistic feedback during airway management procedure practice.

Durable and true-to-life airway is certified for over 20,000 intubation cycles and has a 5-year warranty.

Silicone simulated skin covering offers a lifelike feel and more precise articulation during bag-valve mask ventilation training.

AIRSIM ADVANCE BRONCHI X

Product Code - AA95100X



The AirSim Advance Bronchi X training model has anatomically correct internal features from the nasal passage and airway to fourth generation bronchi.

Ideal for medical training in diagnostic bronchoscopy and airway management techniques including intubation and ventilation.

Includes the AirSim X airway with 5-year warranty.

AIRSIM COMBO X

Product Code - CTC91100X



The AirSim Combo X trainer features the uniquely constructed AirSim X airway with 5-year warranty enhanced with palpable cricoid landmarks, laryngeal cartilages and tracheal rings.

Ideal for teaching & training intubation, BVM & all supraglottic devices plus needle and surgical cricothyrotomy, percutaneous tracheostomy & laryngoscopy.

AIRSIM COMBO BRONCHI X

Product Code - CTC95100X



TruCorp AirSim Combo Bronchi X features the uniquely constructed AirSim X airway with 5-year warranty enhanced with palpable cricoid landmarks, laryngeal cartilages and tracheal rings.

Perfect for practicing intubation, ventilation, percutaneous tracheostomy, needle and surgical cricothyrotomy plus diagnostic bronchoscopy techniques including lung suctioning & isolation.

AIRSIM ADULT X RANGE

Features

	AirSim Advance X	AirSim Advance Bronchi X	AirSim Combo X	AirSim Combo Bronchi X
AirSim Airway designed using CT DICOM data	✓	✓	✓	✓
5 year Airsim X Airway warranty	✓	✓	✓	✓
'Real feel' silicone skin covering for added realism	✓	✓	✓	✓
Anatomically correct internals & visually accurate landmarks	✓	✓	✓	✓
Inflatable tongue bulb to simulate tongue edema	✓	✓	✓	✓
Replaceable lung bags inflate with successful ventilation	✓	✓	✓	✓
Esophagus & replaceable bag representing stomach	✓	✓	✓	✓
Wraparound replaceable neck skin rotates for 10-15 incisions			✓	✓
Sternal notch, tracheal rings, cricoid and laryngeal cartilages			✓	✓
Bronchi accurate down to the fourth generation		✓		✓

Skills

	AirSim Advance X	AirSim Advance Bronchi X	AirSim Combo X	AirSim Combo Bronchi X
Endotracheal/Nasotracheal intubation	✓	✓	✓	✓
Nasogastric (NG) tube insertion	✓	✓	✓	✓
Full range of supraglottic device insertion	✓	✓	✓	✓
Bag-valve mask (BVM) ventilation techniques	✓	✓	✓	✓
Direct and video laryngoscopy	✓	✓	✓	✓
Combi tube insertion	✓	✓	✓	✓
Awake fiber optic examination	✓	✓	✓	✓
Diagnostic bronchoscopy		✓		✓
Lung isolation & suctioning techniques		✓		✓
Needle and surgical cricothyroidotomy			✓	✓
Percutaneous tracheostomy			✓	✓

AIRSIM DIFFICULT AIRWAY RANGE

AIRSIM DIFFICULT AIRWAY

Product Code - DA91100



Adult intubation head trainer provides a solution for varying degrees of difficulty when practicing airway management.

This versatile model ranges from challenging to very difficult to intubate, facilitating a variety of training scenarios from beginner to advanced users.

The AirSim Difficult Airway has been designed to improve management of the unanticipated difficult intubation in accordance with the Difficult Airway Society guidelines.

AIRSIM DIFFICULT AIRWAY WITH BRONCHI

Product Code - DA95100



The AirSim Difficult Airway with Bronchi provides a solution for varying degrees of difficulty when practicing airway management in accordance with the Difficult Airway Society guidelines.

This versatile model ranges from challenging to very difficult to intubate, facilitating a variety of training scenarios from beginner to advanced users.

Ideal for training in percutaneous tracheostomy, needle and surgical cricothyroidotomy and bronchoscopy techniques.

DIFFICULT AIRWAY MAIN SKILLS

Laryngospasm

- Adjustable from normal to complete airway obstruction.
- Sudden closure of the vocal cords can be simulated.
- Upon successful user action, laryngospasm can be mechanically reversed to provide positive feedback

Displaced larynx

- Ability to displace the larynx into a more anterior position to make visualisation of the vocal cords more challenging.
- Adjustable to provide various levels of difficulty.

Tongue edema

- The tongue can be swollen to simulate various degrees of tongue angioedema.

Receding / protruding mandible

- Various degrees of malocclusion, one mandibular variant and two maxillary variants.
- Overbite and underbite features simulated

Trismus

- Ability to grossly restrict mouth opening to make insertion of airway devices more challenging

Neck lock / Head rotation restriction

- Ability to simulate cervical arthropathy through restricting the range of motion of cervical spine
- Neck lock / Head rotation restriction

Cricothyroidotomy & Tracheostomy

- Simulate needle and surgical cricothyroidotomy and percutaneous tracheostomy

AIRSIM DIFFICULT AIRWAY RANGE

Features

	AirSim Difficult Airway	AirSim Difficult Airway with Bronchi
AirSim Difficult Airway designed using CT DICOM data	✓	✓
'Real feel' silicone skin covering for added realism	✓	✓
Anatomically correct internals & visually accurate landmarks	✓	✓
Replaceable lung bags inflate with successful ventilation	✓	✓
Esophagus & replaceable bag representing stomach	✓	✓
Wraparound replaceable neck skin rotates for 10-15 incisions	✓	✓
Sternal notch, tracheal rings, cricoid and laryngeal cartilages	✓	✓
Bronchi accurate down to the fourth generation		✓

Skills

	AirSim Difficult Airway	AirSim Difficult Airway with Bronchi
Endotracheal/Nasotracheal intubation	✓	✓
Nasogastric (NG) tube insertion	✓	✓
Full range of supraglottic device insertion	✓	✓
Bag-valve mask (BVM) ventilation techniques	✓	✓
Direct and video laryngoscopy	✓	✓
Combi tube insertion	✓	✓
Awake fiber optic examination	✓	✓
Diagnostic bronchoscopy		✓
Lung isolation & suctioning techniques		✓
Needle and surgical cricothyroidotomy	✓	✓
Percutaneous tracheostomy	✓	✓
Laryngospasm	✓	✓
Tongue edema	✓	✓
Displaced larynx	✓	✓
Receding / Protruding mandible	✓	✓
Trismus	✓	✓
Neck lock / Head rotation restriction	✓	✓

AIRSIM ADULT RANGE

AIRSIM

Product Code - AA11100



Our AirSim model is ideal for training in airway management and awake fiberoptic intubation.

It features the uniquely constructed AirSim airway for realistic feedback during airway management procedures.

Visually and anatomically correct, the nasal cavity and airway include important internal landmarks for training in nasotracheal intubation and nasally directed fiber optic examination.

AIRSIM BRONCHI

Product Code - AA51100



AirSim Bronchi is a durable airway management trainer for intubation and bronchoscopy.

This model includes the AirSim airway with true, anatomically correct and visually accurate internal features including bronchi down to the fourth generation.

This training manikin can also be used to practice nasotracheal intubation and nasally directed fiberoptic examination.

Features

	AirSim	AirSim Bronchi
Innovative AirSim airway and nasal cavity created from CT DICOM data	✓	✓
Anatomically correct internal features & visually accurate landmarks in airway & nasal	✓	✓
Inflatable tongue with lifelike texture can simulate edema	✓	✓
Replaceable lung bags inflate with successful ventilation	✓	✓
Esophagus & replaceable bag representing stomach	✓	✓
Bronchi accurate down to the fourth generation		✓

Skills

	AirSim	AirSim Bronchi
Endotracheal/ single Nasotracheal intubation	✓	✓
Awake fiber optic examination	✓	✓
Full range of supraglottic device insertion	✓	✓
Bag-valve mask (BVM) ventilation techniques	✓	✓
Direct laryngoscopy	✓	✓
Combi tube insertion	✓	✓
Single lung isolation & suctioning techniques	✓	✓
Diagnostic bronchoscopy		✓

AIRSIM ADULT RANGE

TruCric

Product Code - TCRIC1

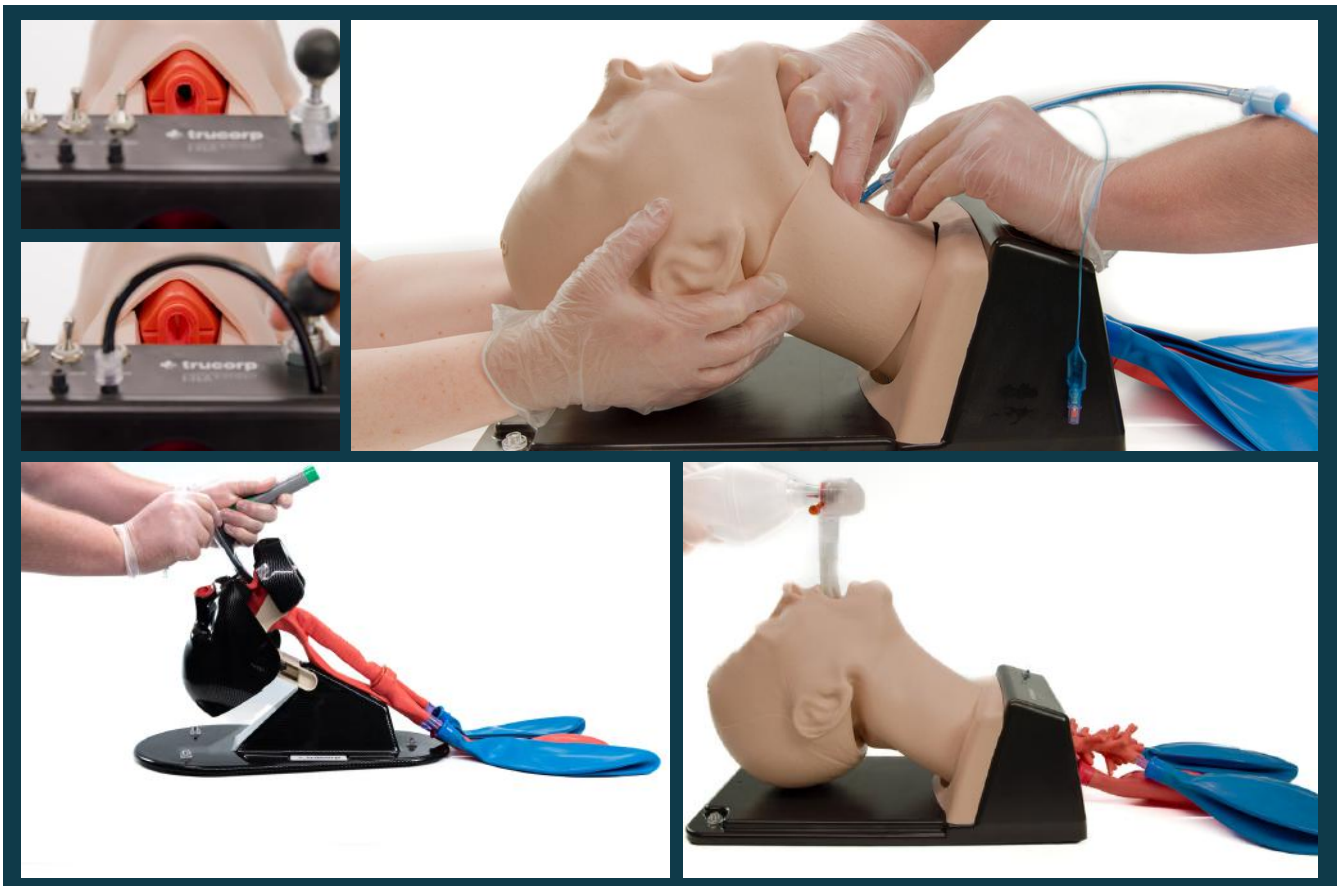


FEATURES

- ✚ Lightweight and durable cricothyrotomy trainer designed for efficient procedure training
- ✚ Palpable cricoid landmarks, laryngeal cartilages & tracheal rings with easy identification of the sternal notch & the clavicle bone
- ✚ Correct technique verification with replaceable lung bag
- ✚ Neck skin can be rotated on the model allowing 10-15 incisions
- ✚ Larynx insert allows 1 surgical cricothyroidotomy & 2-3 tracheostomy procedures
- ✚ All consumables are quick & easy to interchange, perfect for a busy teaching environment

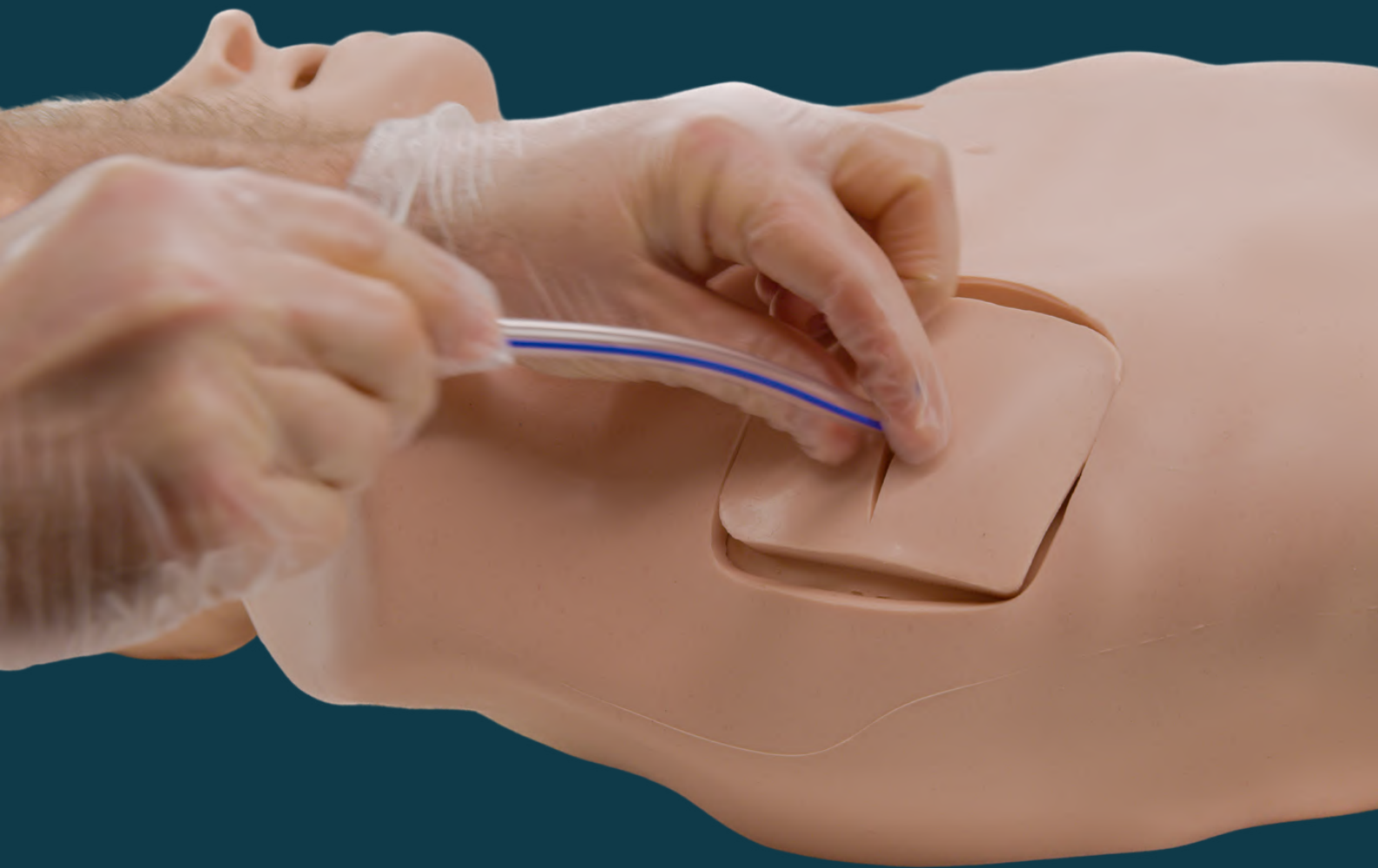
SKILLS

- ✚ Needle & surgical cricothyrotomy
- ✚ Air jet ventilation
- ✚ Percutaneous tracheostomy
- ✚ Seldinger technique
- ✚ FONA airway management



**TRAUMA
TASK
TRAINERS**

04



TRAUMA TASK TRAINERS

TruMan Trauma X

Product Code - TTR2000X

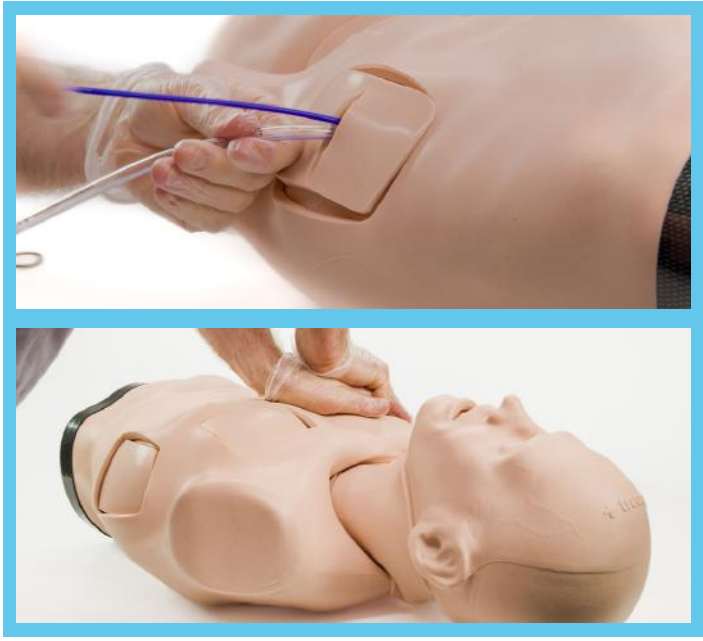


Lifelike training in advanced airway management skills, CPR and emergency surgical procedures for life threatening trauma situations.

Anatomically correct simulated human torso and AirSim X airway facilitate training in percutaneous tracheostomy, needle & surgical cricothyroidotomy, chest tube insertion, needle decompression of tension pneumothorax and more

FEATURES

- + Realistic & durable AirSim X Airway and nasal passage with 5-year warranty
- + Realistic larynx with palpable cricoid landmarks, laryngeal cartilages & tracheal rings
- + Audible hiss when needle is successfully inserted into 2nd & 5th intercostal spaces
- + Easy identification of all anatomical landmarks for CPR, full head tilt with chin lift & jaw thrust, lifelike recoil during compressions
- + Cost-effective & easily replaceable consumables: neck skin, larynx inserts, needle decompression inserts & chest drain inserts
- + Tongue bulb can be inflated to create tongue edema providing a variance during training
- + User feedback through visible chest rise
- + Innovative design requires minimal maintenance & allows for easy product repairs



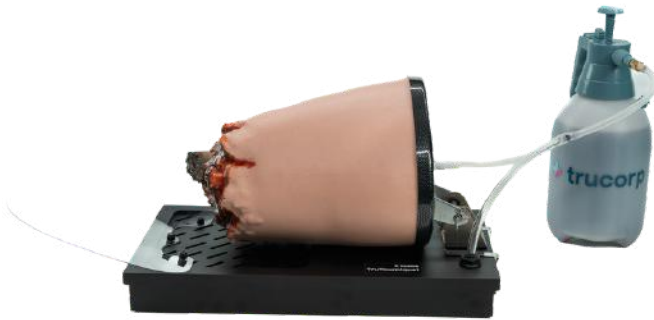
SKILLS

- + Chest tube insertion including surgical incision, blunt dissection, pleural perforation, & finger sweep
- + Needle decompression of tension pneumothorax (2nd & 5th intercostal space)
- + FONA airway management training including needle and surgical cricothyroidotomy
- + Percutaneous tracheostomy
- + Cardiopulmonary resuscitation (CPR)
- + Full use of supraglottic devices
- + Endotracheal intubation with direct laryngoscopy
- + Combi tube insertion
- + Nasogastric tube insertion
- + Bag valve mask ventilation (BVM)
- + Single lung isolation techniques

TRAUMA TASK TRAINERS

TruTourniquet

Product Code - TTQ1000



The TruTourniquet has been designed as a realistic solution for robust training in massive haemorrhage control associated with traumatic amputation e.g. blast injury.

The model is based on a right thigh and provides realistic bleeding control with visual feedback on user performance.

Features

- ✚ It's realistic! Weight, size and movement of leg involved in a traumatic amputation, featuring one bleeding point and a fractured femur.
- ✚ It's durable! Tested for over 40,000 tourniquet applications without fail.
- ✚ Users can simulate a massive haemorrhage when the product is connected to the pressurized blood supply.
- ✚ The model provides visual feedback when the correct tourniquet force has been applied.
- ✚ Quick & easy set-up in less than 5 minutes – if the blood system is empty simply pour the blood back into the pump.
- ✚ Ability to detach stump from the base to use in a non-classroom environment.
- ✚ The splash shield helps avoid blood overflow and keeps mess to a minimum. It can be easily attached/detached as required.

TruWound

Product Code - TWO1000



TruWound is a realistic gunshot wound model with a pressure blood supply system to simulate severe haemorrhaging.

It allows realistic wound packing training techniques with visual feedback when the correct pressure is applied to the packed wound.

The pressurized blood system allows the instructor to control blood flow to either 1, 2 or all 3 wounds at once, making it ideal for a fast-paced classroom environment.

Features

- ✚ It's realistic! Size, appearance, and feel is realistic to a large bullet wound in the upper thigh and can be packed with haemostatic pads to teach wound packing procedures.
- ✚ It's durable! Tested for over 1500+ procedures without fail.
- ✚ Users can simulate heavy bleeding with venous and arterial flows with the pressurized blood system.
- ✚ The model provides visual feedback when the correct pressure is applied to the packed wound.
- ✚ Initial set-up time is less than 5 mins.
- ✚ The TruWound blood collection containers help keep mess to a minimum during packing procedures and the artificial blood is washable and will not stain the model.
- ✚ Suitable for a classroom setting by having three wounds operating simultaneously.

**ULTRASOUND
TASK
TRAINERS**

05



ULTRASOUND TASK TRAINERS

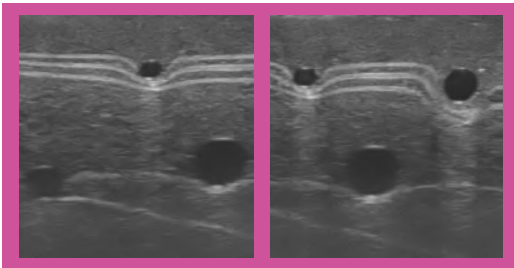
TruIV Block

Product Code - TIV100



Part of the TruUltra product range, the TruIV Block allows learners to gain proficiency in the skills associated with IV cannulation.

Featuring 8 veins (superficial and deep) ranging from 4-8mm in diameter, users can practise the use of ultrasound during IV procedures.



Features

- + Realistic features: Features 8 veins (4 superficial and 4 deep) plus fascia layers for enhanced realism.
- + Target various veins ranging from 4mm to 8mm in diameter. Ultrasound imaging is incredibly lifelike
- + Confirm successful IV cannulation procedures by withdrawing blood
- + Ready to begin training in under 5 minutes
- + Unique, self-regenerating TruUltra materials diminish the appearance of needle tracks to facilitate a high volume of repeated practice. The insert will facilitate approx. 4000 needle penetrations before a replacement insert is required
- + Replacement insert is cost-effective and easy to replace with no disruption to teaching time
- + Delivered in a compact, protective carrier case – perfect for training in different locations
- + Longitudinal and transverse anatomical viewing options
- + Compatible with all ultrasound machine brands

Skills

- + Ultrasound-guided IV cannulation
- + Probe positioning & movement
- + Recognition of veins in soft responsive tissue

TruNerve Block

Product Code - TNB110



This innovative 3-in-1 ultrasound model provides hands-on training in:

- + Ultrasound-guided nerve blocks with ability to verify needle tip location
- + Ultrasound IV insertion with embedded vessels & realistic blood flashback
- + Ultrasound bone imaging featuring a fractured bone structure

Trainee anesthetists develop, practice and maintain the skills necessary to use ultrasound for guiding regional anesthesia and vascular access procedures. Simulated anaesthetic fluid can be injected around the nerve.

Features

- + Contains epidermal layer, two simulated vessels (4mm), a nerve bundle (with surrounding artery and vein), a fractured bone & fascia layers
- + Nerve bundle allows fluid entry & withdrawal for anaesthesia fluid administration
- + Positive fluid flow when vessels are accurately accessed
- + Constant blood flow for realistic flashback
- + Color Doppler flow imaging
- + 1000+ needle incisions with self-healing/regeneration of the TruUltra material
- + Needle tracks disappear with very minimal damage to material
- + Longitudinal and transverse anatomical viewing options
- + Realistic needle tip identification and artefact

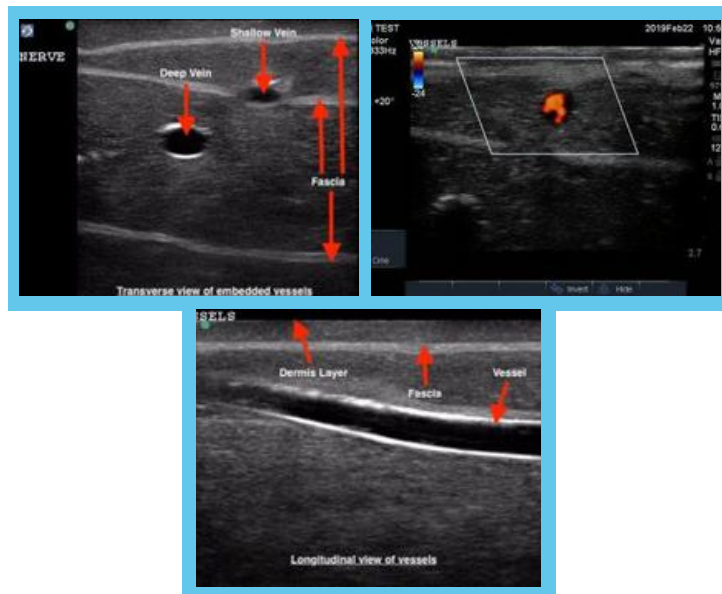
ULTRASOUND TASK TRAINERS

TruNerve Block

Product Code - TNB110

Skills

- + Ultrasound-guided regional anesthesia
- + Ultrasound-guided vascular access
- + IV cannulation (venipuncture and vein cannulation)
- + Injection of simulated anaesthetics with visual air & fluid retention possible
- + Injection of fluid around the nerve
- + Identification of arterial and venous blood flow
- + Fractured bone identification
- + Ultrasound education & machine demonstrations (ideal for ultrasound manufacturers)



TruPICC

Product Code - TPIC100

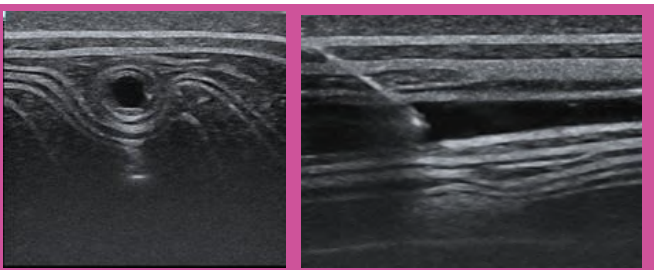


TruPICC is an adult male training arm designed for effective training in peripherally inserted central catheters and IV insertion.

This ultrasound-guided PICC line and IV placement training model develop the user's skills associated with needle placement, guidewires and catheters using ultrasound.

It's also ideal for ultrasound manufacturers for education & demonstrations.

The upper arm anatomy features correct and realistic vascular anatomy, lifelike feel and responsiveness and our unique self-healing TruUltra material.



IV Arm Training Features

- + Realistic visualisation of the median cubital, brachial and basilic veins
- + Differentiation between the basilic vein and the brachial artery
- + Verify correct needle placement by the withdrawal of fluids
- + Real feel vascular 'tenting' upon entry into the vessel

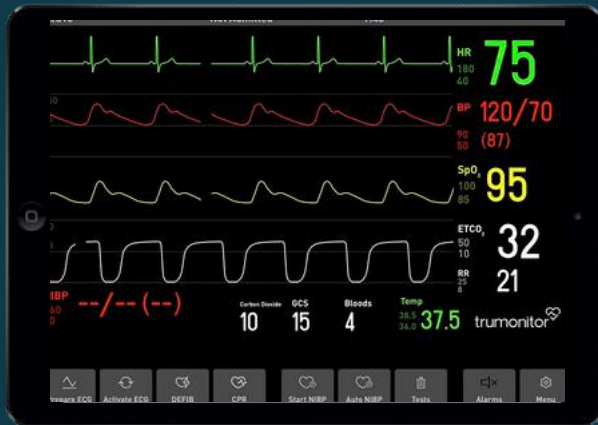
PICC Line Training Features

- + Full catheter PICC line placement and Seldinger techniques can be practiced with a recommended 4F catheter
- + Features vascular anatomy of an entire arm including the brachial artery, brachial, cephalic basilic and median cubital vein
- + Ability to use ultrasound on the upper chest which contains the superior vena cava designed to allow users to verify correct catheter placement
- + Option to switch on/off flow to either the cephalic or basilic veins to prolong the life of the insert
- + Fluid can be injected into the model to verify needle tip location. When vessels are accessed fluids can be withdrawn and administered

SIMULATION APPS

06

truAED 



trumonitor 

truvent 



SIMULATION APPS



Introducing TruAED, a self-directed simulated AED (Automated External Defibrillator) app for objective CPR (Cardio Pulmonary Resuscitation) training.

Familiarise yourself with common automatic defibrillators, and receive meaningful and valuable feedback on the quality of your chest compressions.

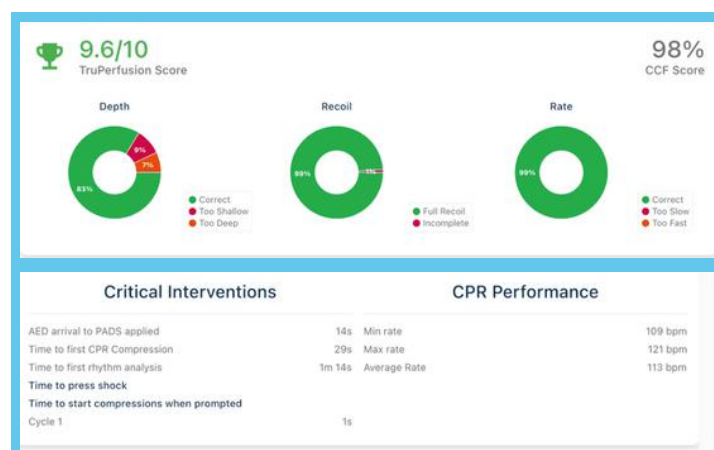


TruAED App Benefits

- ✚ Train anytime, anywhere, and be fully prepared to save a life in a cardiac emergency. The app provides a realistic and interactive training experience, allowing you to practice and perfect your CPR skills with a manikin, in a safe and controlled environment.
- ✚ Self-directed simulated approach, you will receive objective performance feedback through real time audio, graphical and text feedback from the simulated AED will provide performance feedback and corrective actions required.
- ✚ Easy to use app and is suitable for healthcare professionals, first responders, and anyone who wants to learn CPR.
- ✚ Three various settings: Practice mode, Self-directed learning, or an Assessment mode (pre-planned or real time instructor led assessment).
- ✚ 3-in-1 solution to effectively delivering CPR and AED training through; The TruAED app, Training manikin and built in de-briefing video software.

Features

- ✚ Summary of CPR results
- ✚ CPR detailed breakdown of each cycle performed
- ✚ Checklist showing all audio prompts and graded based on users' experiences
- ✚ Ability to allow the students/users to practice independently
- ✚ Ability to upload the whole scenario (video, feedback, and pdf certificate) to your LMS, export to your data cloud or can be printed.
- ✚ All previous student/user sessions can be viewed on any iPad or tablet by logging into your TruAED account.
- ✚ The instructor can adjust the grading system so for a more experienced user the outcomes of good, fair, or poor can be altered via a time variant.
- ✚ Basic or advanced checklists can be created and completed based on user experiences and match the learning needs of the student.



SIMULATION APPS



Features

- Scenarios can be created to allow the users to put some context to the scene and to build up a real-life situation.
- Multiple AED skins are available to choose based on user preference.
- Access can be securely shared via a unique code to allow certain and privileged student/users access to TruAED.
- Credit system can ensure traceability of users and based on usage (self-directed or assessment)

Manikin Setup & Compatibility

TruAED allows a quick and easy connection with your chosen manikin which provides feedback on CPR performance in real time.

TruAED is currently compatible with the following:

Laerdal Advanced QCPR or Little Anne QCPR family (adult, toddler, and baby)

- This setup allows the instructor to see in real time how the student is performing (remotely or local).
- Pads can be placed on the manikin and mouth to mouth or BVM (Bag Valve Mask) given.
- This product gives objective feedback on Depth, rate, recoil, and hand location on the chest.

CPR Add-on Kit

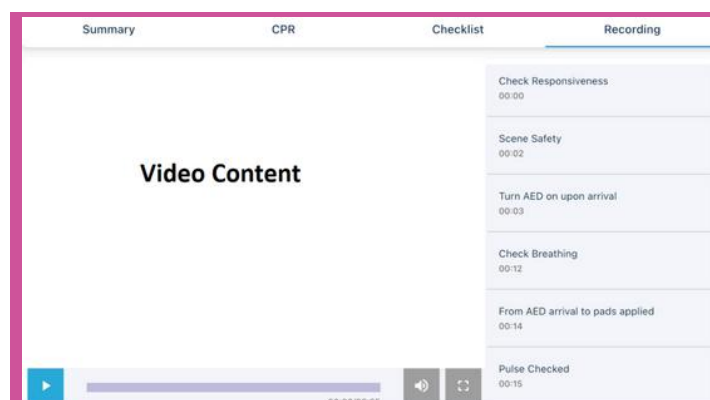
- These are for manikins that have no electronics and are basic in nature. CPR Add-on Kit is a smart device that can be easily installed on existing non smart manikins, to make CPR training more engaging and efficient allowing the manikin to talk to TruAED to give real time CPR/AED feedback.
- Pads can be placed on this model and mouth to mouth/BVM given if required.
- Please see full list of products applicable through the IM lab website (Trucorp do not sell the CPR add on kits)

(Please note AED pads are not provided)



Video Debrief

The video debrief feature within TruAED allows the full simulation to be captured and available for playback to assist post simulation discussions. Student actions are automatically linked to relevant time on captured video, allowing the instructor to easily navigate captured video and deliver efficient feedback.



SIMULATION APPS

trumonitor  incorporation with



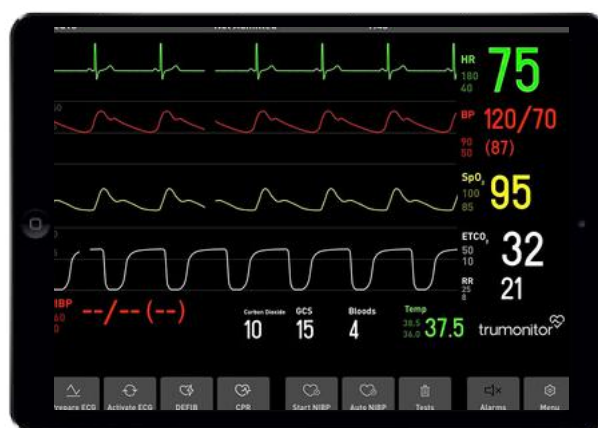
Laerdal

helping save lives









TruMonitor is a training solution that allows learners to interpret vital signs in clinical settings. With TruMonitor, your learners will experience realistic training scenarios, with an emphasis on diagnosing and improving critical decision-making skills.

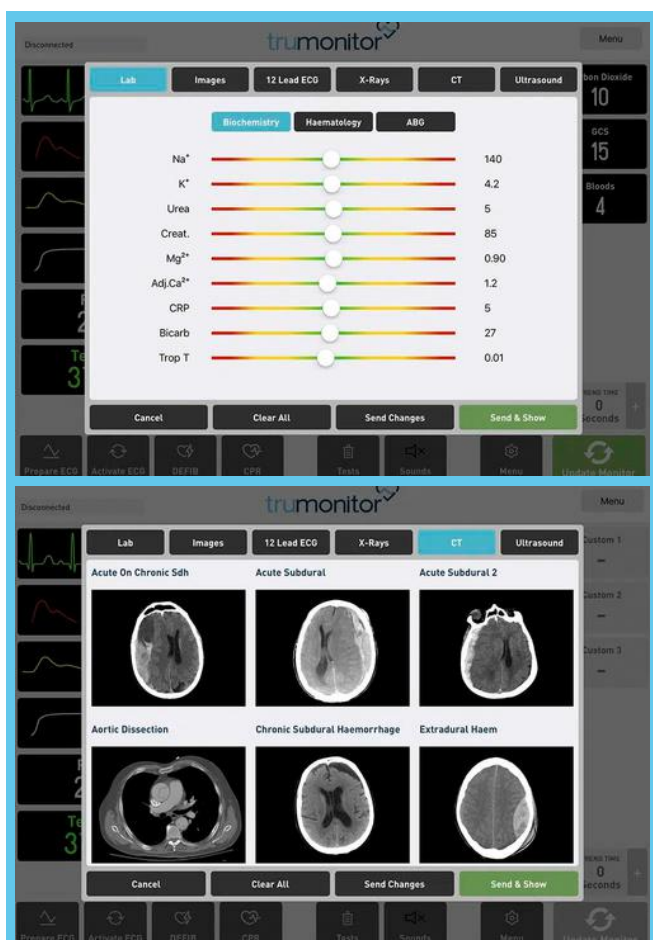
Instructors can create and control different scenarios to conduct true-to-life medical simulation training. Students will learn how to react to changes in vital signs, how to interpret ECG, how to perform pacing and defibrillation and more relevant actions can be introduced as the scenario evolves.

With only two tablets (iOS or Android), instructors and learners can experience a training solution that takes ACLS training to the next level. TruMonitor is a cost-effective alternative to using real equipment and can be used in any training situation – onsite, in-situ, in the classroom, or remotely – regardless of student and instructor location.



Features

-  **ZOLL® X Series® Interface**
Integrate ZOLL® X features to train high-quality CPR, defibrillation, and pacing for all stages of transporting critically ill patients.
-  **40+ ECGs**
Allow students to train on a variety of different ECG rhythms to increase knowledge and competence.
-  **Defib and pacing**
Students can train safely in a simulated environment without any exposure to risk of electric shock to students and others.
-  **Scenario builder**
Use pre-loaded scenarios or create bespoke scenarios, by using the embedded scenario builder.
-  **Clinical investigation**
Enhance the learning exercise by introducing lab results, X-Ray, Ultrasound and CT scans – or upload clinical images from your camera roll.
-  **Remote learning**
Create engaging learning experiences independent of learners or instructor's locations.
-  **Trend timing feature**
Making gradual changes helps to focus on students' actions instead of constantly interacting with the device.
-  **Real-time CPR feedback**
Give learners the confidence that they are providing the best CPR possible at every experience level with real-time feedback.



SIMULATION APPS

truvent 

incorporation with



Laerdal

helping save lives











TruVent is an innovative virtual simulation app to teach ventilation management safely without the need for a ventilator or a simulator. With TruVent, learners with limited experience can gain the basic skills needed to operate a ventilator with ease.

With TruVent, users with limited experience can gain the basic skills needed to operate a ventilator with ease, or more complex scenarios can be run for experienced clinicians. The instructor can adjust underlying patient characteristics, creating a clinically accurate respiratory engine that will display appropriate pressure, flow and volume curves in real time.

Deliver ventilation training in a classroom environment, or virtually using the Interactive Remote Learning integration. Multi-user and large group session options are available.



Features

-  Make ventilator adjustments
-  Perform waveform analysis
-  Use common and advanced mechanical ventilation modes
-  Adjust patient physiology and observe effects on waveforms in real-time
-  Create complex clinical scenarios
-  Train on generic ventilator interface
-  Simulate ventilation on a spontaneously breathing patient
-  Practice high-risk low-frequency events
-  Learn pressure, flow, and volume curves in real-time
-  Manage ventilation complications (i.e. tension pneumothorax, anaphylaxis, bronchospasm, tracheal tube disconnect pulmonary embolism, malignant hyperpyrexia, anesthesia toxicity, cardiac arrest, and more)

DARK SKIN TONES

Dark skin tones are available on all TruCorp manikins and products.

To purchase a dark skin tone, please add 'DS' to the end of the product code, for example an AirSim Advance X with dark skin tone would be 'AA91100XDS'.

DELIVERY

Our standard delivery time is 3-4 weeks from receipt of purchase order, however we will endeavour to deliver sooner if possible.

TruCorp products are carefully designed and produced at our UK HQ.

WARRANTY

We offer a 1 year warranty on all products and an additional 5-year warranty (up to five years of protection and cover) on TruCorp branded airways on any AirSim X and Trauma X range.

TruCorp 5-year warranty does not apply to AirSim, AirSim Bronchi or AirSim Difficult Airway, only 1-year warranty.

This applies to all products which have been used appropriately as noted in the product user guide.

More details: <https://trucorp.com/warranty/>

PURCHASING IN USA, CANADA, UK & AUSTRALIA

USA & Canada: (Limbs and Things)

P: (912) 629-0357

E: weborders@limbsandthings.com

UK: (Limbs and Things)

P: +44 (0)117 311 0500

E: gbsales@limbsandthings.com

Australia: (Limbs and Things)

P: +61 3 9708 6511

E: info@limbsandthings.com

Rest of World:

E: info@trucorp.com

P: +44 (0) 28 3888 2714



Celebrating
20 YEARS
of excellence

www.trucorp.com



www.trucorp.com

